



Environment



# Global Landcare

## Our greatest export

What it offers right now to Australian Landcare

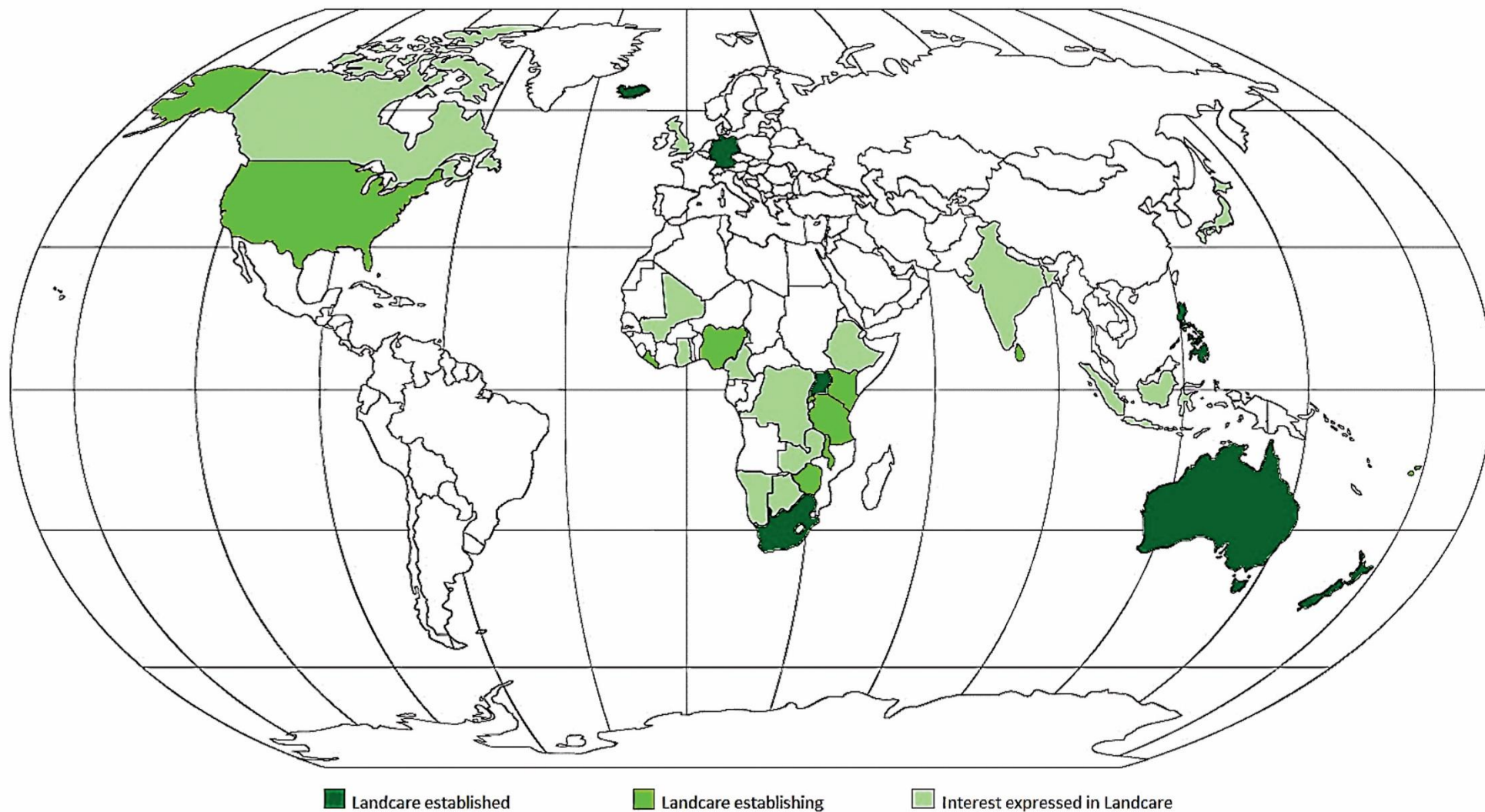
*Australian Landcare International*





# Investigating the Potential of International Landcare

Mary Johnson, RMIT and Jayne Curnow, ACIAR





## The Study will:

- Explore how Landcare contributes to sustainable agricultural land management and development outcomes
- Assess the role of Landcare as an extension model in sustainable agriculture and natural resource management

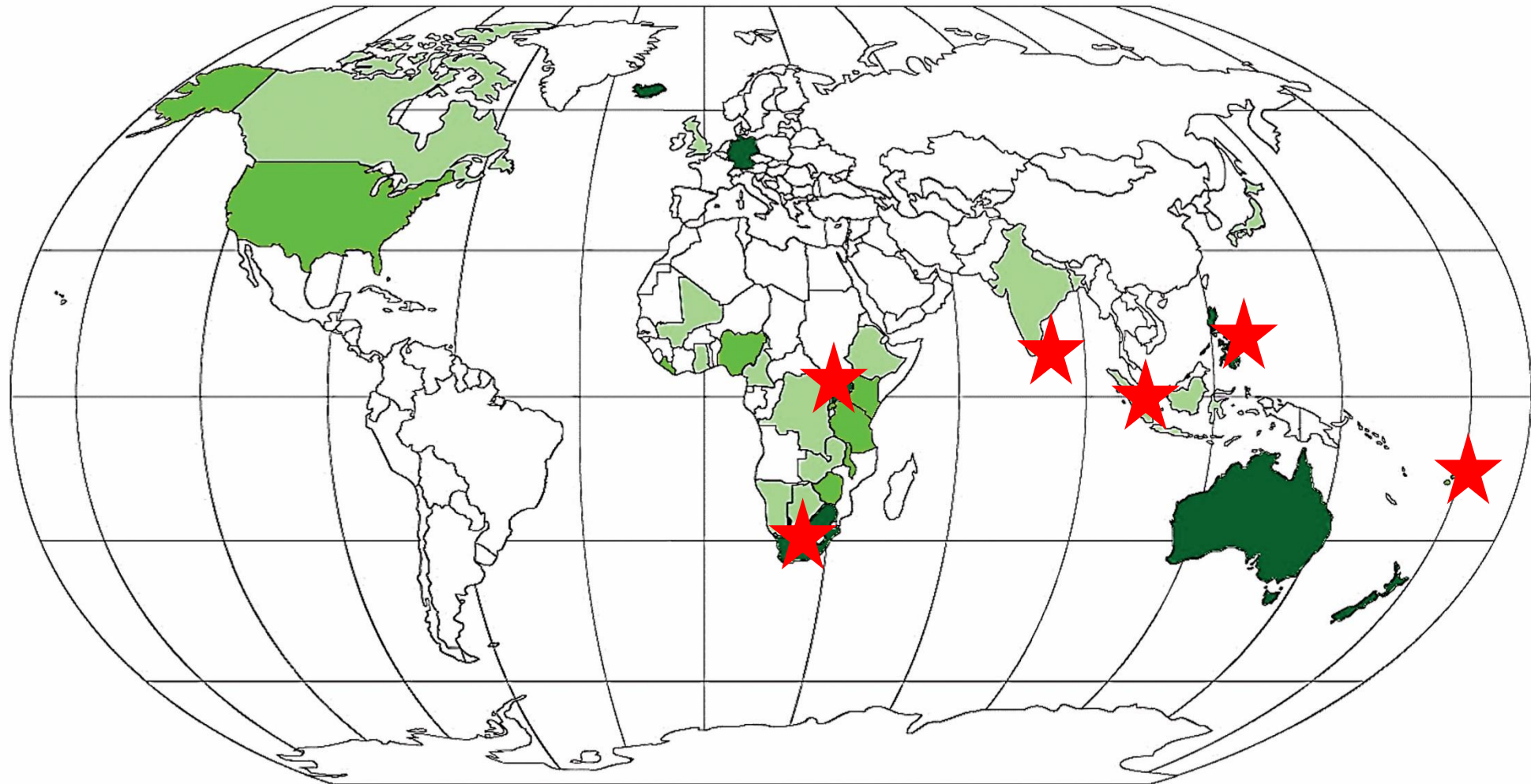
Commissioned and funded by Australian Centre for International Agricultural Research (ACIAR)



Australian Government

Australian Centre for  
International Agricultural Research





Landcare established

Landcare establishing

Interest expressed in Landcare



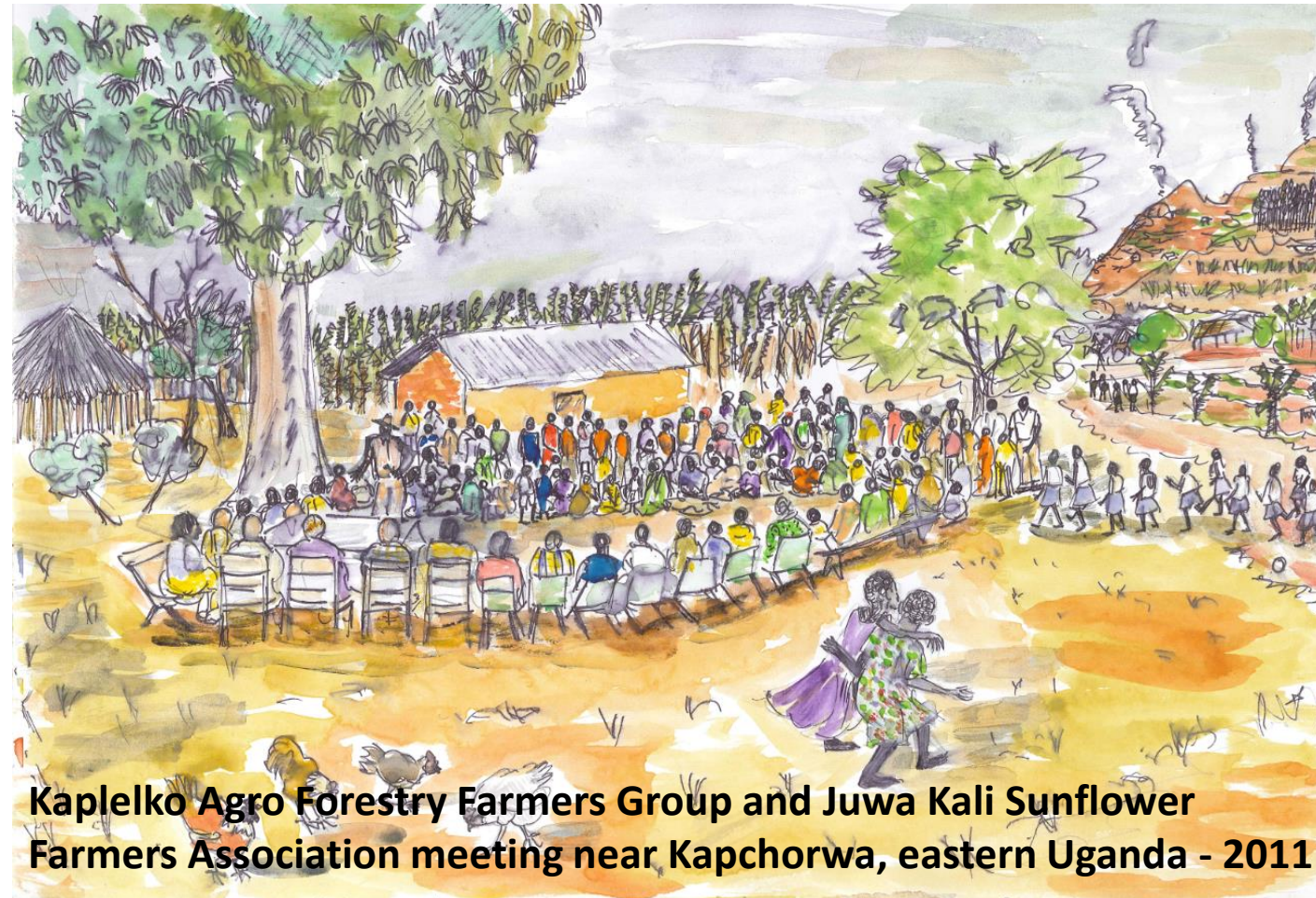
# Study contacts:

- Mary Johnson, RMIT  
+61 408 53 0808  
mary.johnson@rmit.edu.au
- Clinton Muller, RMCG  
+61 498 192 596  
clintonm@rmcg.com.au





# Introduction to ALI



**Kaplelko Agro Forestry Farmers Group and Juwa Kali Sunflower Farmers Association meeting near Kapchorwa, eastern Uganda - 2011**

Rob Youl, Chair, Australian Landcare International



## A quick Landcare timeline:

**1986** – Germany and Victoria

**1990** – Australia-wide

**1990s**

- Iceland (Andrew Campbell, Andres Arnalds)
- NZLT – Don Ross, Richard Thompson (after **2007**, Nick Edgar)
- Mindanao (Dennis Garrity, Noel Vock, Horrie Poussard, Mary Johnson, Jenny Metcalfe, Chris Rhinehart, David Swete-Kelly, John Muir)







**1998-2000** South Africa — Sue Marriott, Elaine Spencer-White – later several consultants

**1998** – SILC forms – SUBJECT OF RECENT BOOK

- First of eight international conferences in Australia

**2000s**

- From **2000** United States – mainly Virginia and North Carolina – Gerry Moles; Geoff McFarlane visited Canada often promoting Landcare
- African Landcare Network – led by South Africa and ICRAF/WAC
- First Landcare master class, Melbourne – Julian Prior team



## 2000s continued

Post-tsunami project, Sri Lanka – Emma Bennett; Tonga projects begin – Bob Edgar (Rotary) and Horrie Poussard

## 2008 ALI formed

- Java – SILC; Australian Environment Minister Tony Burke learns at meeting from South African counterpart that Landcare is amongst our best aid initiatives.
- Prof Michael Seigel, Nanzan University, starts bringing Japanese student groups to Australia to study Landcare.
- Mieke Bourne, former WA regional Landcare co-ordinator, employed at ICRAF, Nairobi. ALI, ICRAF publish *Landcare: Local action, global progress*
- SILC links with Neosynth, Sri Lanka, fosters projects in Pakistan and Bangladesh





## 2010s

- Uganda master class – Crawford, ICRAF; Fijian projects
- Malawi master class; LFPI forms and expands beyond Mindanao – Phase II includes self-sufficiency, research, funding and extension
- Merapi Landcare personnel (Java) visit their farmer-counterparts in Mindanao – Crawford
- Jamaican training; Fiji; SILC, ALI visit Sumatra
- Japanese collaboration continues via student exchanges; SILC visits Timor Leste
- Zambian training – Crawford, ACIAR, ICRAF; Nagoya conference – first international Landcare conference outside Australia







## 2018

- Training activities St Kitts and Nevis (thanks, HE High Commissioner for Trinidad and Tobago) and Uganda (Crawford, ACIAR)
- Interest from Nepal, Botswana, Ecuador
- ALI's small projects fund over five years raised some \$50 000 for plus 40 small projects in 16 countries\*. Currently finalising transfer of \$5200 for bicycles for Landcare co-ordinators in Zambian Copperbelt

\* Tonga, Fiji, Timor Leste, Indonesia, Sri Lanka, Cambodia, the Philippines, Bhutan, South Africa, Nigeria, Tanzania, Democratic Republic of Congo, Uganda, Jamaica, Pakistan, Zambia









In summary, we have taken a 'Landcare approach' to assist local communities overseas to protect and improve their land and water resources.

We have done this through training, networking, project support, publicity, publications and events.







## Why Landcare is so effective ...it offers:

- flexibility,
- multi-disciplinary character,
- freedom from corruption (group decision-making),
- commercial partnerships.

It brings skills and knowledge to communities, and enhances climate-change awareness/commitment, and disaster planning and response.





The best Landcare networks, here and abroad, operate as community enterprises.

I believe strongly that Australian aid agencies today are paying more attention to Landcare's achievements.



## What comes next?

- Pursue the Nagoya suggestion to launch an SE Asian training program, also involving NZ, Japan and LFPI - Philippines Landcare.
- First course based on Bohol island, expanding reasonably quickly to cover the Indian sub-continent and South Pacific.
- Involving UK Queens Canopy program in a revegetation project linking Uganda and Kenya.
- Investigating how to build the Caribbean training program. Forestry projects in Uganda and Japan.







Most importantly ALI needs paid co-ordination. We must be one of the few reasonably successful Landcare enterprises in Australia that has never had such support. So far our extensive activities have been totally voluntary, but, as we are on the verge of expansion and greater recognition, I am adamant we must have a staff – and an office. This goal must be pursued politically.



# *Landcare Lessons*

## *Philippines*

---

### **2003 to 2018**

Nikki Cerdaña Cordero



# Philippine Context



- 105+M population
- 20 % upland with severe poverty, high malnutrition, serious lack of access to extension services
- High levels of soil erosion
- Acidic and inherently poor soils
- Inappropriate farming practices
- Declining farm productivity
- Declining farm size due to high population pressure
- Deforestation in upper watersheds
- Upland extension systems are often inefficient and ineffective
- Lack of access to credit and markets
- But Filipinos are **HAPPY** and **HOSPITABLE**





- 1. Importance of Facilitation**  
(Landcare Facilitator, Farmer Facilitator, local and macro level).
- 2. Landcare programs must be institutionalized** at the Local Government Unit level.





3. **There must be a balance between NRM and Economic Livelihoods for sustainability.**
4. **Most upland farmers are Small Holders (0.5 ha-2.0ha) which require special Engagement strategies.**
5. **There are benefits in Engaging at the Sub Village Level.**







**6. Capacity building** of farmer groups and institutions needs to be both technical and organisational

**7. Landcare approach** is showing significant promise in Improving NRM and livelihoods in conflict affected areas of Mindanao





# Promise for the future

Environment



- 1. Established Landcare Foundation that sustains Landcare advocacies**
- 2. Robust networks with farmer groups, local and regional institutions, National Government agencies**
- 3. Well tested research based technologies and extension approaches with various research partners**



# UGANDA – THE PEARL OF AFRICA

## CONTEXT OF LANDCARE SUCCESS STORY

---

**Joy M.B. Tukahirwa**

# UGANDA – THE PEARL OF AFRICA

Environment



## CONTEXT OF LANDCARE SUCCESS STORY

Uganda-Land linked  
( 246,000 Km<sup>2</sup>)

Population 41m (2016)  
Growth rate of 3.3%  
per yr

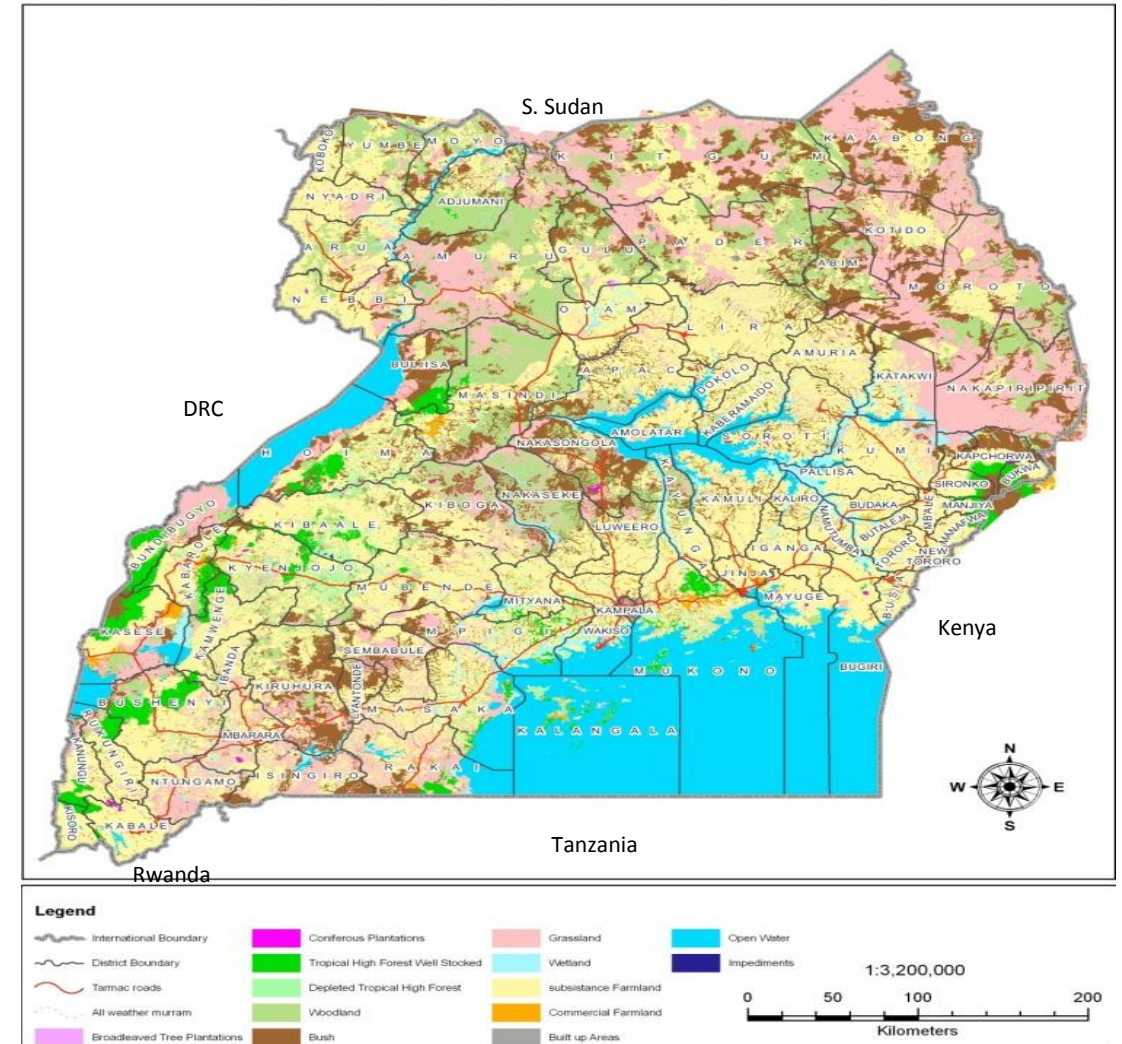
Deforestation 2% annual  
loss

Trees, forests, woodland 0-14%  
(45% in 1890)<sup>4</sup>

Agriculture key  
34% GDP, 81% employment,  
vulnerable to CC

Uganda commitment  
2.5m ha  
Bonn challenge Commitment

UGANDA: LANDCOVER CLASSIFICATION 2005





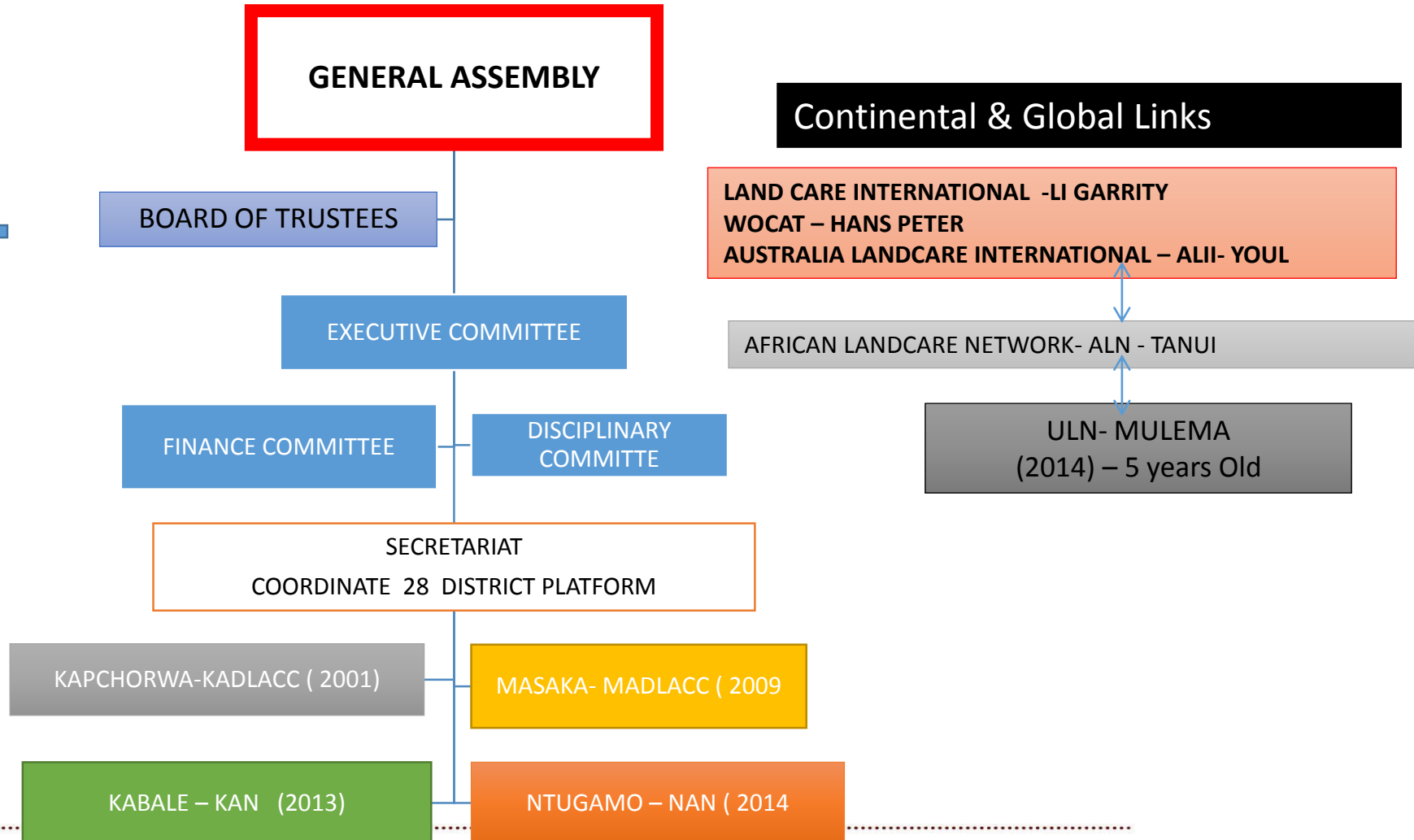
# UGANDA LANDCARE NETWORK

*A National Platform for LandCare Stewardship*



Govt – central ;and Local; NGO Int and local;  
District platforms , NRM ; Farmer and Legal

- Nurturing land care groups
- Capacity building
- Enhanced visibility of land care initiatives
- Facilitating Knowledge sharing
- Partnership and networking hub
- Grant management



**Uganda Landcare Network (ULN)**

P.O. Box, 21183, Kampala, Tel: +256 772 631 836, Email: [info@ugandalandcare.org](mailto:info@ugandalandcare.org).

Website: [www.ugandalandcare.org](http://www.ugandalandcare.org)





# KEY THEMATIC AREAS THRU: Environment

Partnerships ; Capacity Building and Facilitating Community Collective Action



1. Agroforestry and tree planting
2. Strong and viable district platform
3. Vibrant Junior landcare
4. Community Landcare







# A SAMPLE KNOWLEDGE MANAGEMENT PRODUCTS

## • FIELD MANUAL

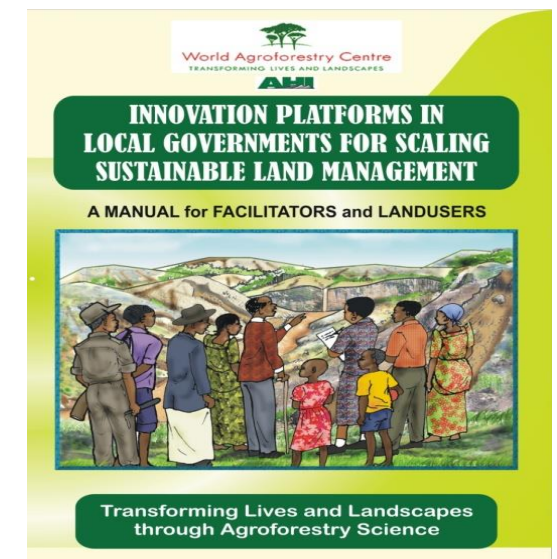
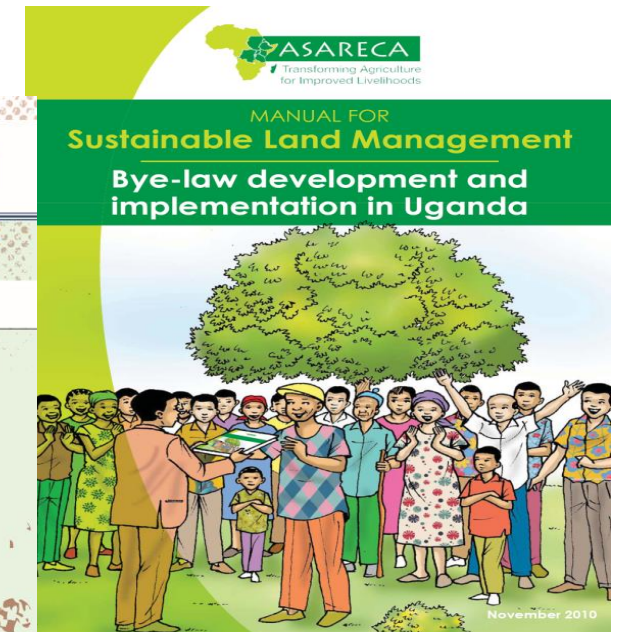
- Bye Law Development
- Scaling SLM for Facilitators

## • JOURNAL ARTICLES

- Significance of social networks
- Bylaws as means of scaling SLM
- Land use change on Mt Elgon
- Adoption of factors in SLM

## • BOOK CHAPTERS

- Strategies setting up Innovation Platforms
- Operationalisation of Innovation Platforms
- Institutionalisation of Innovation Platform
- Landcare contribute to household development





# IMPACTS ASSOCIATED WITH LANDCARE INITIATIVES

Environment



**Improved food nutrition,  
and incomes**

**productive healthy  
environment**

**empowerment of rural  
communities**







# Towards Resilient Landscapes and Livelihoods through Landcare approach

Launching Biennial National Landcare Conference in Uganda - Nov. 2019

## ► Background

Uganda Landcare Network (ULN) – a national landcare platform for landcare stewardship in partnership with local, continental and global Landcare platforms is launching a Biennial National Conference in Uganda in November 2019. This unique event is positioned to bring together landcare members and other stakeholders from grassroots organisations, champions, local and international NGOs, and researchers, to multilateral organisations and government agencies from around the world to advance understanding of landcare approach and its linkages to food security, environment conservation and landscape restoration.

By convening all ULN members at national level and key partners of the network, the conference creates opportunities for participants to learn from, and contribute towards scaling sustainable land management.

In view of its evidence based and action-orientation, the conference programme is strategically structured to provide opportunities to participants exchange ideas, learn from each other's landcare experiences and successes, strategies, while building synergies so that new perspectives can emerge on scaling sustainable land management.

The national conference is also an opportunity for ULN fraternity to adopt a declaration with common commitments to action during the General Assembly of its members also associates.

## ► Conference Themes

- Sustainable and resilient communities - Local and International case studies
- Conserving biodiversity and natural resources across boundaries
- Scaling up and scaling out innovation in sustainability; policies and practices
- Water, IWRM, catchments and the landcare model of integrated NRM
- Climate adaptation and disaster risk reduction
- Linking the NRM and food security agendas





## ► Why Kabale in South West Uganda



Lake Bunyonyi

One of the characteristic elements of the ULN is the elaborate engagement with active district landcare platforms firmly anchored in the local government authority structures for sustainability. Following their active participation in landcare activities including community initiatives, junior landcare programmes and several mushrooming agroforestry networks, Kabale District Landcare Platform KADILAP has expressed interest in co-hosting the 2019 conference jointly with ULN and its partners.

Despite a history great achievements towards land management in Kabale under the British protectorate government (1893 - 1962) with outstanding impacts in 1950s, the gaps between glaring needs illustrated by mismanaged slopes, and pro landcare policy implementation continue to persist with frequent human induced catastrophes such landslides and floods.

The current Uganda government has set up ambitious targets for 2.5 million hectares of land to be restored under Bonn Challenge pledge by 2020. The national landcare conference will go along way to discuss opportunities and incentive mechanisms towards achieving the set targets. As co-hosts, ULN together with the National Organising Committee, will provide an opportunity for the government to dialogue on pro landcare innovations and learn from experiences from the neighbouring countries and across the globe. Overall, the National landcare Conference will be a key moment for Uganda to showcase achievements associated with adoption of landcare approach.

Kabale in South Western Uganda is one hour away from Kanombe - Rwanda International airport. The venue of the conference, is by the shores of the second deepest lake in Africa, unfortunately believed to be shrinking in depth as a result of sedimentation linked to poor land management practices that trigger topsoil erosion down-slope into the lake.

## ► Conference Program

### Plenary and break-out sessions

These will be organised by ULN and its partners to engage the audience and encourage lively discussion.

### Keynotes

Global and regional keynote speakers are invited to provide their perspective on the conference themes, followed by engaging discussion between the speakers and participants.

### Breakout sessions/ Side events

Break-out sessions are focused on learning and building the skills of those attending them. They are self-organised, with organisers responsible for contacting the speakers and arranging the agenda of the session together.

### National Landcare awards

ULN has established distinguished landcare awards at country level to focus and recognise landcare champions who are implementing in an outstanding manner one or many landcare initiatives demonstrating people-centred landcare and as a result, positively influencing a critical mass of adopters. The nominees will be selected through a Call for Good Practices launched in February 2019.

## FRIENDS OF UGANDA LANDCARE NETWORK (ULN)







# Opportunities to get involved

- Time travel - Caribbean training
- Opportunities for professional development
- Opportunities to aid in developing countries
- Expanded networks worldwide

Andrea Mason, Australian Landcare International





A Sense of Belonging



# The strength of the Landcare brand

Environment

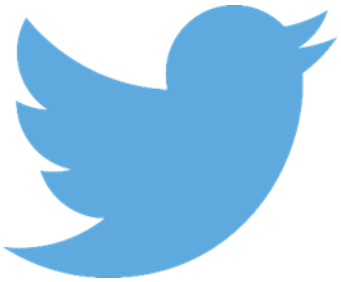


- A stroke of brilliance – the ‘caring’ hands
- United under one banner
- Highly recognised brand in Australia
- “Landcare” - Recognised worldwide
- Bipartisan support in Australia
- Adopted by governments across the globe in various ways
  - The Landcare Approach
    1. Community based (for decisions and actions) as local groups
    2. Improving natural resource management for production and conservation
    3. Open to partnerships for information, funding and other opportunities
    4. Individual groups autonomous in their management (no hierarchy).





# Our global network



**#landcare**

**@AusLandcareInt**



**[www.facebook.com/australianlandcare](http://www.facebook.com/australianlandcare)**



**[www.alci.com.au](http://www.alci.com.au)**



# Workshop/questions/discussion

Facilitated by: Nick Edgar, NZ Landcare



# Workshop/questions/discussion

- Training – SE Asian training program and online
- Landcare group twinning
- Global Landcare development
- Networking
- Contact through tourism