



Australian  
**Landcare**  
International

Australian Landcare International (ALI) is an incorporated, not-for-profit organisation whose aim is to assist other countries to manage their natural resources using a Landcare approach.



## December 2017

### President's message.

The international Landcare conference held in Nagoya, Japan from 5-8 November was the culmination of several years' work involving many ALI members in student exchanges and excursions, liaison, sharing ideas, providing advice and conference planning – thanks to all.

Our sponsors were the Australia-Japan Foundation and in Geneva, the World Business Council for Sustainable Development (WBCSD). We are very grateful to these bodies.

Eleven countries were represented: Japan, Australia, NZ, South Africa, Uganda, Ghana, Iceland, Pakistan, Cambodia, the Philippines and USA. With some 70 people present overall, the mood was intimate. ALI's fundraising enabled a substantial number of speakers and rank-and-file Landcarers to attend. The organising committee –

Michael Seigel, Kazuki Kagohashi, Jen Quealy, Andrea Mason, Allan Dale and myself - were very pleased with the roll up.

It was the first Landcare research conference ever, and the first international Landcare conference outside Australia. It offered excellent networking, and a sounding-board for new ideas. Nick Edgar, CEO of NZLT was a keen contributor. Japanese visitors well regarded by many Victorians, Tomomi Maekawa and Misato Imase, both attended – Tomomi now works for the Toyota Foundation in Tokyo, which seems auspicious. St Kilda EcoCentre's Reiko Imada was there for one day – she is a native of Toyota City, which adjoins Nagoya, and was home that week visiting family and friends.

There were pre- and post-conference tours, based on Japanese Landcare's

two main concerns. the repopulating the deserted or geriatric countryside, and helping communities survive disasters and rebuild – through Landcare.

While we were in Nagoya, our friend Matthew Reddy from WBCSD was in Bonn at the UN Climate Change COP 23 conference and made a brief statement about our Landcare conference. Thank you Matthew.

I am preparing a report which will emphasise social media outputs, the opportunities to develop and progress ideas and quickly build new partnerships, and canvass participants' views on what they themselves can do next, especially via ALI.

We were especially pleased to have Landcare-style practitioners from Pakistan, Ghana and Cambodia, and senior reps of Uganda Landcare (Dr Joy Tukahirwa) and the Landcare Foundation of the Philippines (LFPI) – the latter is booming under enthusiastic president Henry Binahon, an Indigenous farmer, and the able CEO Evy Carusos..

Beatrice Dossah, a recent graduate of Iceland's UN University, was attending courtesy of Iceland's Landcare program, which is led by the esteemed Dr Andrés Arnalds. She got a ready introduction to the African Landcare Network, via Joy and Francis Steyn, from Western Cape, South Africa.

We also wish to expand links with Japanese community environment

groups. At the same time, we were very pleased to introduce Megan Rowlatt of Intrepid Landcare to the international arena.

*Rob Youl*

*President*

[robmyoul@gmail.com](mailto:robmyoul@gmail.com)

m 0407 362 840

## Recent news

### Democratic Republic of the Congo (DRC)

Patrick Kaka of GIERI is making extraordinary progress in the DRC since his group first received \$300 from the OLF in 2013. The Congo Landcare coordinator works with ICRAF in Eastern DRC, where he and Mieke Bourne are drafting a major regional Landcare plan. A project protecting several hundred thousand hectares of native forest is also a possibility. See GIERI's new website for more information: [www.gieri.org](http://www.gieri.org)

### Zambia

We hope to run a crowd-funding platform soon via Pozible to enable volunteer Landcare co-ordinators in Solwezi in Zambia's Copperbelt to acquire bicycles so they can spread their advice on conservation farming much further.

## Caribbean

We have just learned that a Landcare training event may take place on the Caribbean island of St Kitts-Nevis in May 2018. We would love to send an Australian contingent of instructors to this event. Whereas Australian participation is likely to be self-funded, we can guarantee it will be enjoyable and rewarding, as for Andrea Mason and Rob Youl and spouses, Ken and Alison, did something similar in Jamaica early in 2015. Let Rob ([robmyoul@gmail.com](mailto:robmyoul@gmail.com)) know if you are interested. Visit Cuba or Florida or the Orinoco or Amazon afterwards!



## Global Land Outlook

*United Nations Convention to Combat Desertification*

*This outlook aims to present a unique perspective on one of the Earth's most precious assets: land.*

Land is an essential building block of civilization, yet its contribution to our quality of life is perceived and valued in starkly different and often incompatible ways. The world has reached a point where we must reconcile these

differences and rethink the way in which we plan, use, and manage the land.



This first edition of the Global Land Outlook demonstrates that informed and responsible decision-making, improved land management policies and practices, and simple changes in our everyday lives, can, if widely adopted, help to reverse the current worrying trends in the state of our land resources .



**Part One** of this Outlook takes a broad brush look at the big picture.

**Part Two** discussed some of the most pressing global issues that impact land use, demand, and condition as well as the responses needed to achieve the target of Land Degradation Neutrality





**Part Three** highlights six response pathways that producers and consumers, governments and corporations can follow to stabilize and reduce pressure on land resources as well as illustrative case studies and key tools to help achieve success.

1. *Multifunctional landscape approach*: prioritizing and balancing different stakeholder needs at a landscape scale while incorporating site-level specificity on land use, demand, and condition so that a full range of goods and services are produced.

2. *Resilience building*: enhancing the adaptive capacity of communities and ecosystems through a mix of conservation, sustainable management, and restoration of land resources.

3. *Farming for multiple benefits*: optimizing the most desirable suite of ecosystem services from food production activities. This requires a fundamental shift in agriculture practices to support a wider array of social, environmental, and economic benefits from managing land-based natural capital.

4. *Managing the rural-urban interface*: framing a new approach to spatial planning to minimize the impacts of urban sprawl and infrastructure development.

5. *No net loss*: providing incentives for the sustainable consumption and production of natural resources. Land degradation neutrality or no net loss of healthy and productive land means more services onsite and less negative environmental or social impacts offsite.

6. *Creating an enabling environment*: providing the conditions necessary to scale local successes into large-scale, transformative initiatives.

You can download the full report from <https://global-land-outlook.squarespace.com/the-outlook/#the-bokk>

## Changes in ALI Committee following AGM

The 9<sup>th</sup> AGM was held on October 13<sup>th</sup> and a couple of changes were made to the committee. Our treasurer Paula Havelberg stood down after her good service over recent years and Phil Horner took over that role. We are pleased to welcome to the committee Malachy Tarpey from East Gippsland and Megan Rowlatt from Intrepid Landcare in NSW.

President : Rob Youl

Vice President : Vacant

Secretary : Sandra McPhee

Treasurer : Phil Horner

Committee : Horrie Poussard, Megan Rowlatt, Clinton Muller, Malachy Tarpey, Andrea Mason

At the following ALI Committee meeting in December, Horrie Poussard was elected as Vice President and Ian Oxenford was placed on the committee to fill that vacancy. Ian had been on the Committee previously.

Make a tax-deductible donation to ALI for our Overseas Landcare Program and help get projects up and running. We currently have projects awaiting funding. For more information talk to President Rob Youl about donating.

#### **DONATE ON-LINE**

<http://alci.com.au/overseas-landcare-fund/>

You can also donate by cheque (made payable to ALI) to

ALI Treasurer,  
17 Lookout Rd Kalimna , Vic. 3909.

Or direct bank transfer to Bank Australia:

Acct: Australian Landcare International. **BSB:** 633-000.

**Acct:** 133103598

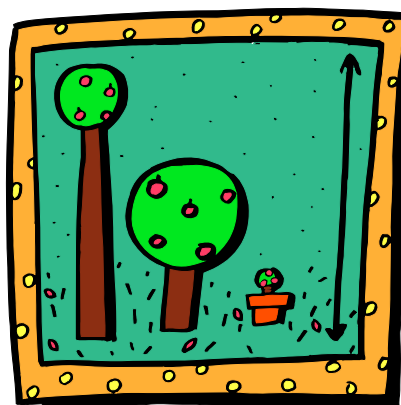
And send details (name, address & donation date) to:

[treasurer@alci.com.au](mailto:treasurer@alci.com.au)

## **ALI projects in 15 countries.**

Since September 2013, ALI has supported over 30 projects in 12 countries. The support is mainly as small grants (\$500-1000) to local community and Landcare groups to carry out projects to protect and improve natural resources. The outcomes are better resource conservation and in some cases, better food production. The focus is on developing countries where ALI has close contacts with our partners. To date we have helped community groups in : Congo DRP, Fiji, Indonesia, Laos, Nigeria, Philippines, South Africa, Sri Lanka, Tanzania, Timor Leste, Tonga and Uganda.

Our generous donors are private or local Landcare groups and networks and some have provided funds every year , often to on-going projects.



## Sign up as a member

ALI membership is still only \$20 per annum and free for students and under 25s. Landcare groups pay \$40 per year. Membership helps us with funds for doing all those little but important things that keep our not-for-profit organisation ticking over. Membership also allows us to present a case to donors and government that ALI is a significant organisation doing worthwhile things with overseas communities.

We are always happy to see new members supporting ALI. We now have more than 60 members on our books and would love to have more. If you know of anyone who would be interested in what we do, please mention ALI to them.

### ALI Committee

**President : Rob Youl**

**Vice President : Horrie Poussard**

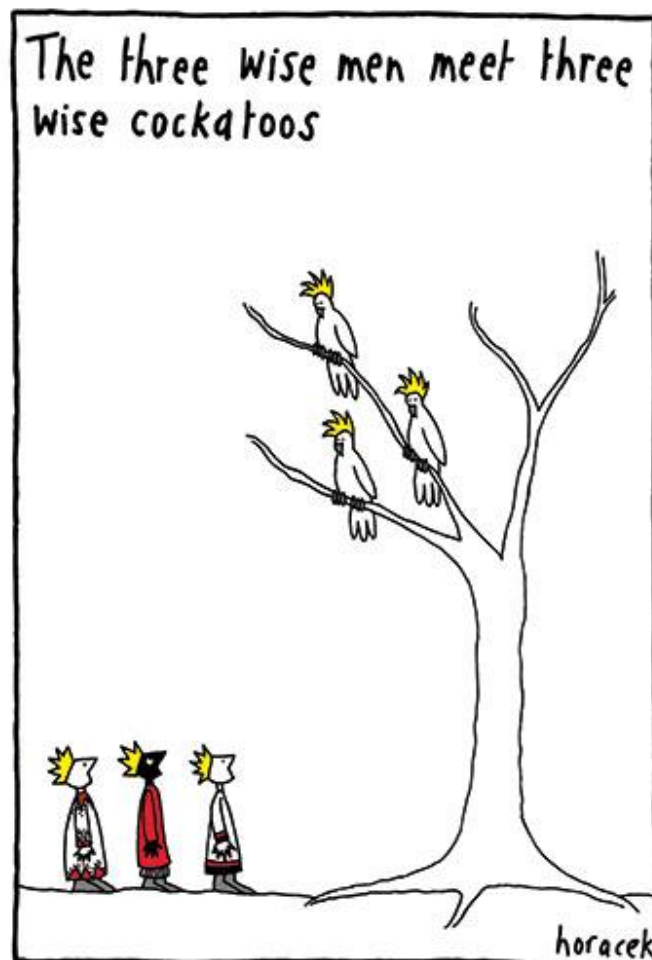
**Secretary : Sandra McPhee**

**Treasurer : Phil Horner**

**PR : Andrea Mason**

**Projects : Malachy Tarpey**

**Committee: Ian Oxenford, Megan Rowlatt, Andrea Mason, Clinton Muller,**



*Another great cartoon by Judy Horacek*

**All the best for  
Christmas and 2018**

## ALI website and Facebook

Comments welcomed ..



[www.facebook.com/Australianlandcare](http://www.facebook.com/Australianlandcare)

And for Twitter fans



ALI@AusLandcareInt



Become a member of ALI. Your membership helps ALI keep up with what is happening globally and supports our website and other office costs.

## THE BENEFITS OF ALI MEMBERSHIP

- Using your Landcare experience to assist overseas groups
- Overseas contacts for future travel
- Developing links with possible sister groups overseas
- Being part of a world-wide movement for land, biodiversity and community improvement
- Regular e-newsletter on overseas Landcare developments

## ANNUAL MEMBERSHIP

Student or under 25	Free
Individual	\$20
Landcare or community group	\$40

Name/Group

Address

P/C

Email

Interested in volunteering some time? Yes

We need help with admin, publications, PR, etc.

Type of membership (x) :

Student or < 25

Individual

Group

**Return with cheque (where required) to:**

ALI: Treasurer

17 Lookout Rd Kalimna , Vic. 3909

Or direct Bank Transfer to Bendigo Bank

**Acct:** Australian Landcare International. BSB 633-000 Acct 1331 03598

**And send details to [treasurer@alci.com.au](mailto:treasurer@alci.com.au)**