



Australian  
**Landcare**  
International

Australian Landcare International (ALI) is an incorporated, not-for-profit organisation whose aim is to assist other countries to manage their natural resources using a Landcare approach.



## AUGUST 2015

### PRESIDENT'S NOTE

#### President's message

As ever, ALI has more on than it can really handle with ease and elegance.

#### Communications

Send all material to Andrea (thanks very much) for website, Twitter and Facebook publishing: Andrea Mason [andrea.mason@findingnorth.net.au](mailto:andrea.mason@findingnorth.net.au)

#### Joan Kirner

The world lost a great woman when Joan died recently. Many have since reflected on her intelligence, vision, drive, charm, accessibility, generosity, humour and toughness. We hope that her service to Landcare will be commemorated well, including through projects to promote Landcare abroad.

#### Great work, thanks

New members Liz de Jong and Treesh Reeve have respectively assisted Horrie with financial management and collating the Overseas Landcare Fund (OLF) database. Many thanks to you both.

#### Projects and initiatives

Horrie Poussard and Bernie Wonder have worked hard on the paperwork to achieve DGR status for ALI – many thanks, gentlemen. At the same time they have built our membership to more than fifty.

Africa remains in our sights, with plans to support hard-working Patrick Kaka in the DRC (the Congo); liaison with Uganda, which has adopted Landcare as a national program; and my attendance next month at the World Forestry Conference in Durban, which includes a Landcare side event, via ICRAF/WAC and African Landcare Network, led by Clinton Muller.

Moreover, several ALI members met Jimmy Musiimes, co-ordinator of Kabale Agroforestry Network in SW Uganda, on his recent Rotary study tour.

Whereas Landcare in Japan continues to progress (it has four Landcare facilitators now) ALI's Australia-Japan Foundation bid for \$52 000 for mutual visits by Landcare people from both countries, plus post-disaster assistance via Jen Quealy, was unsuccessful – a disappointment to all, especially as we had superb testimonials from Japan. I am attempting to find out from DFAT/AJF



Australian  
**Landcare**  
International

**Australian Landcare International (ALI)** is an incorporated, not-for-profit organisation whose aim is to assist other countries to manage their natural resources using a Landcare approach.

*Where next?* And Jen Quealy and Malachy Tarpey are thinking about possible sources of corporate support.

ALI has put a proposal to Crawford to fund Landcare training in Fiji in late September – thank you Horrie for hard work on this proposal.

Post-Jamaica, Andrea Mason and I are pursuing several leads, such as talking to Australian organic famers; dispatching excellent material on agroforestry training from Rowan Reid (much appreciated by Knockalva School); contact with food media in the Caribbean; further liaison with Cricket Australia – could it sponsor small Landcare projects in cricketing countries? Meanwhile Hanover & Wolverhampton Link Organisation Project, our partner in Jamaica, has joined ALI. Moreover it is seeking information on how to set up a Landcare project.

#### **Overseas Landcare Fund - now two years old**

Recent payments: \$1000 to IMI, Timor Leste; \$650 to Junior LandCare project, Western Cape RSA; \$500 to Uganda for a new computer for Jimmy Musiimes

Moreover, French Island Landcare has offered \$1000 for Junior Landcare projects overseas. I've passed on ideas for projects in Africa to the group and this wonderful Youtube link from Uganda: [https://www.dropbox.com/sh/625sitol4vqiugb/AA\\_A2d6Efp-8gTmucgfe86fSra?dl=0](https://www.dropbox.com/sh/625sitol4vqiugb/AA_A2d6Efp-8gTmucgfe86fSra?dl=0)

#### **Longer term planning and pleasure**

There is talk of an international Landcare conference in Iceland – we will keep you informed. Moreover, next year the two-yearly South African LandCare conference will be held at Kimberley in Northern Cape Province in September or October. I have attended two of these and they are extraordinary, especially from the Junior Landcare point-of-view.

*Rob Youl*

*President, ALI*

*0407 362 840*

*robmyoul@gmail.com*

## CONTENTS

President's Note

Nigerian Landcare on Show

Conservation Agriculture in  
Tanzania

Membership Renewals



Australian  
**Landcare**  
International

**Australian Landcare International (ALI)** is an incorporated, not-for-profit organisation whose aim is to assist other countries to manage their natural resources using a Landcare approach.

## NIGERIAN LANDCARE ON SHOW

Our Nigerian Landcare man, Ikponke Nkanta, has been actively developing Landcare in Nigeria for several years now and ALI gave him an Overseas Landcare Grant last year to work with local communities to protect vital wetlands. Previously we supported him with a small grant to help protect the habitat of the threatened Sclater's Guenon (*Cercopithecus sclateri*) an endemic Nigerian Monkey which is not found in any other parts of the world. Sclater's guenon is Nigeria's only endemic primate species. It occurs in a few forests in the southern part of Nigeria and is very rare. It is classified as Endangered by the IUCN and listed on Appendix II of CITES.

Ikponke recently took part in the [6th Annual Africa Weeks for the Animals](#), where he presented the various Nigerian Landcare education activities to support the protection of African animals. These included wildlife conservation talks among youths;



playing and distribution of wildlife films/movies among youths and conservation education within the two active Landcare communities (Ikot Uso Akpan and Mbiakong-Uruan). He has been working on these vital activities with few resources but a lot of local energy. ALI is always looking for ways to support people like Ikponke who are working often under extreme financial and physical conditions to improve local community environments.

## CONSERVATION AGRICULTURE PROJECT EMPOWERS TANZANIAN FARMERS

Australian Hellen Bradburn has been working with groups of women farmers in the Karatu district of Tanzania to improve food production by teaching skills in conservation agriculture (CA).





*Bashay farmers and extension officers participated in innovation platform training*

Thanks to a generous donation by the Merton Landcare group in Victoria, ALI was able to contribute a grant of \$500 in October last year towards the project, which has already helped quadruple average farm yield.



*Discussing benefits of new information and ideas*

CA Agriculture in Karatu is characterized by low and stagnant yields, overdependence on rain-fed farming, low level of education among rural women, and low uptake of conservation agriculture technology particularly among women.

Crucially, more than 50% of the agricultural activity is performed by women, who produce about 60-70% of the food in the region. This system of production is characterised by distinct gender division of labor based on patriarchal norms that ascribe household roles to the woman and financial control to the man.

Political, economic and technological inventions have shaken up traditional gender roles, with women increasingly occupying roles previously assigned to men, but without an appropriate increase in resources for effective production. Stereotyping has also greatly limited women's access to and control of vital production assets such as land, technology, education, credit and extension services.

Through a combination of practical and theoretical training, Bradburn's project empowered women to learn and trial CA technology. The project has already made significant contributions to the livelihoods of participating women's households and newly formed groups. *(Continued overleaf)*



Australian  
**Landcare**  
International

**Australian Landcare International (ALI)** is an incorporated, not-for-profit organisation whose aim is to assist other countries to manage their natural resources using a Landcare approach.

Here are just some of the advances made so far:

- Increased farm yield from 5 bags per acre before the project to 20 bags (average) bags per acre after the project
- Increased income among households including female-headed households leading to increased investment in agriculture and ability to meet basic needs in life
- Increase to access to CA information and technologies by especially women due to frequent contact with our technical staff, responsiveness of women to participate and host demons/trials increased availability of CA knowledge and skills to women and households.



*Bashay farmer in the field*



*After harvesting maize, the stover is spread on farm for soil fertility and weed suppress while pegin peas remain until harvest time*

ALI has raised more than \$12 000 over the last 2 years, mainly from Landcare group donations to support projects like this in Asia, Africa and the South Pacific. Contact ALI at [treasurer@alci.com.au](mailto:treasurer@alci.com.au)



Australian  
**Landcare**  
International

**Australian Landcare International (ALI)** is an incorporated, not-for-profit organisation whose aim is to assist other countries to manage their natural resources using a Landcare approach.

## MEMBERSHIP RENEWALS

Sorry this has been a bit late but I have been away for a couple of months at the crucial end of financial year.

We have got over 50 members now (when they renew !) which is an important number as it allows us to seek some tax concessions for any donors to our programs, particularly the Overseas Landcare Fund. It is important to continue to have a strong membership. We are also pleased to welcome a number of Landcare groups as members. It provides their members with a window onto the broader world of Landcare.

The new membership category of FREE membership for students and under 25s has attracted new blood into ALI which is always good and we hope to work increasingly closer with these younger members.

**For direct payments, ALI's bank account details are:**

**Bendigo Bank**

**Account : Australian Landcare International**

**BSB 633-000**

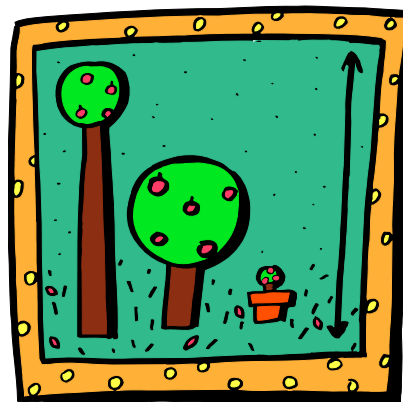
**Acct: 1331 03598**

**Please add your name to the transfer and send contact details to me.**

Looking forward to all the old members renewing – and signing up new young members.

*Horrie Poussard*

*Secretary ALI*





Australian  
**Landcare**  
International

**Australian Landcare International (ALI)** is an incorporated, not-for-profit organisation whose aim is to assist other countries to manage their natural resources using a Landcare approach.



Become a member of ALI. Your membership helps ALI keep up with what is happening globally and supports our website and other office costs.

## THE BENEFITS OF ALI MEMBERSHIP

- Using your Landcare experience to assist overseas groups
- Overseas contacts for future travel
- Developing links with possible sister groups overseas
- Being part of a world-wide movement for land, biodiversity and community improvement
- Regular e-newsletter on overseas Landcare developments

## ANNUAL MEMBERSHIP

Student or under 25	Free
Individual	\$20
Landcare or community group	\$40

Name/Group

Address

P/C

Email

Interested in volunteering some time?

Yes

We need help with admin, publications, PR, etc.

Type of membership (x) :

Student or < 25

Individual

Group

**Return with cheque (where required) to:**

Treasurer ALI:

32 Loch Avenue, St Kilda East 3183 Vic, Australia

Or direct Bank Transfer to Bendigo Bank

**Acct:** Australian Landcare International. BSB 633-000 Acct 1331 03598 **And send details to [treasurer@alci.com.au](mailto:treasurer@alci.com.au)**

[www.alci.com.au](http://www.alci.com.au)